



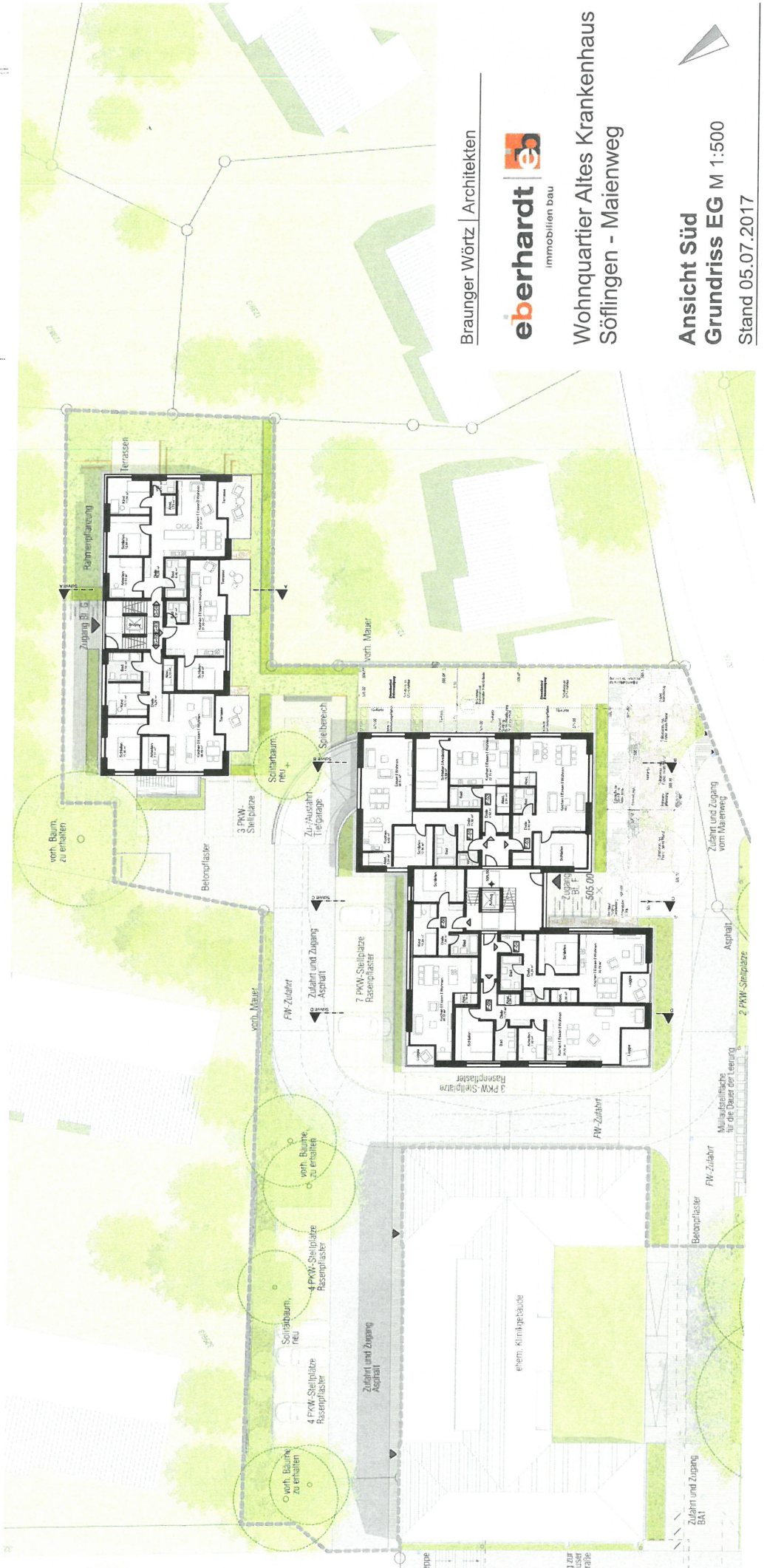
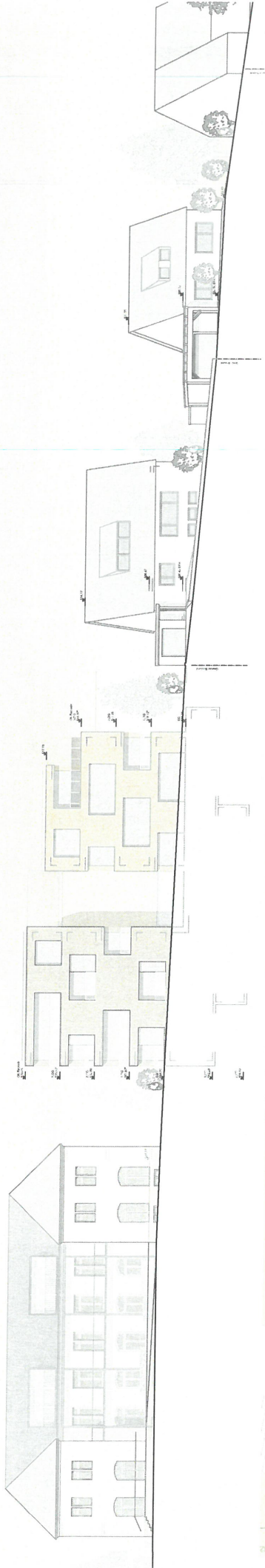
Braunger Wörtz | Architekten



Wohnquartier Altes Krankenhaus
Söflingen - Matienweg

Übersichtsplan M 1:750

Stand 05.07.2017



Braunger Wörtz | Architekten



Wohnquartier Altes Krankenhaus
Söllingen - Marienweg

Ansicht Süd
Grundriss EG M 1:500
Stand 05.07.2017

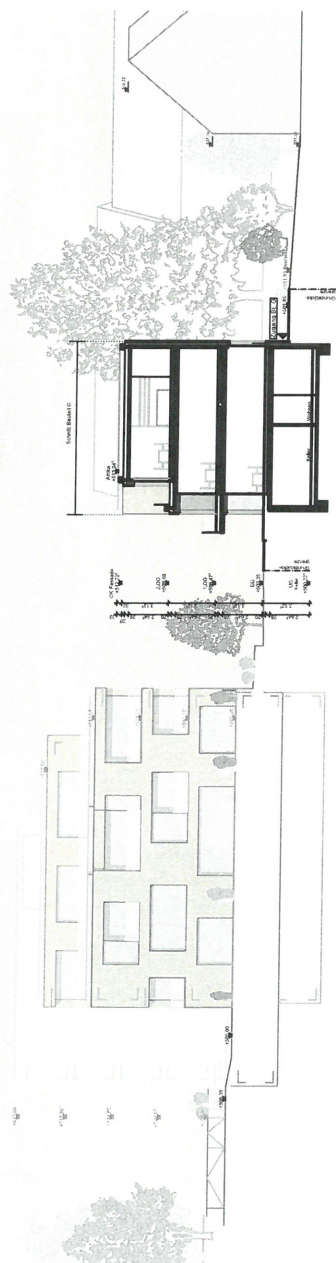


Braunger Wörtz | Architekten



Wohnquartier Altes Krankenhaus
Söflingen - Maientweg

Ansicht Ost u. Süd Bt. G
Grundriss 1.OG M 1:500
Stand 05.07.2017



Braunger Wörtz | Architekten



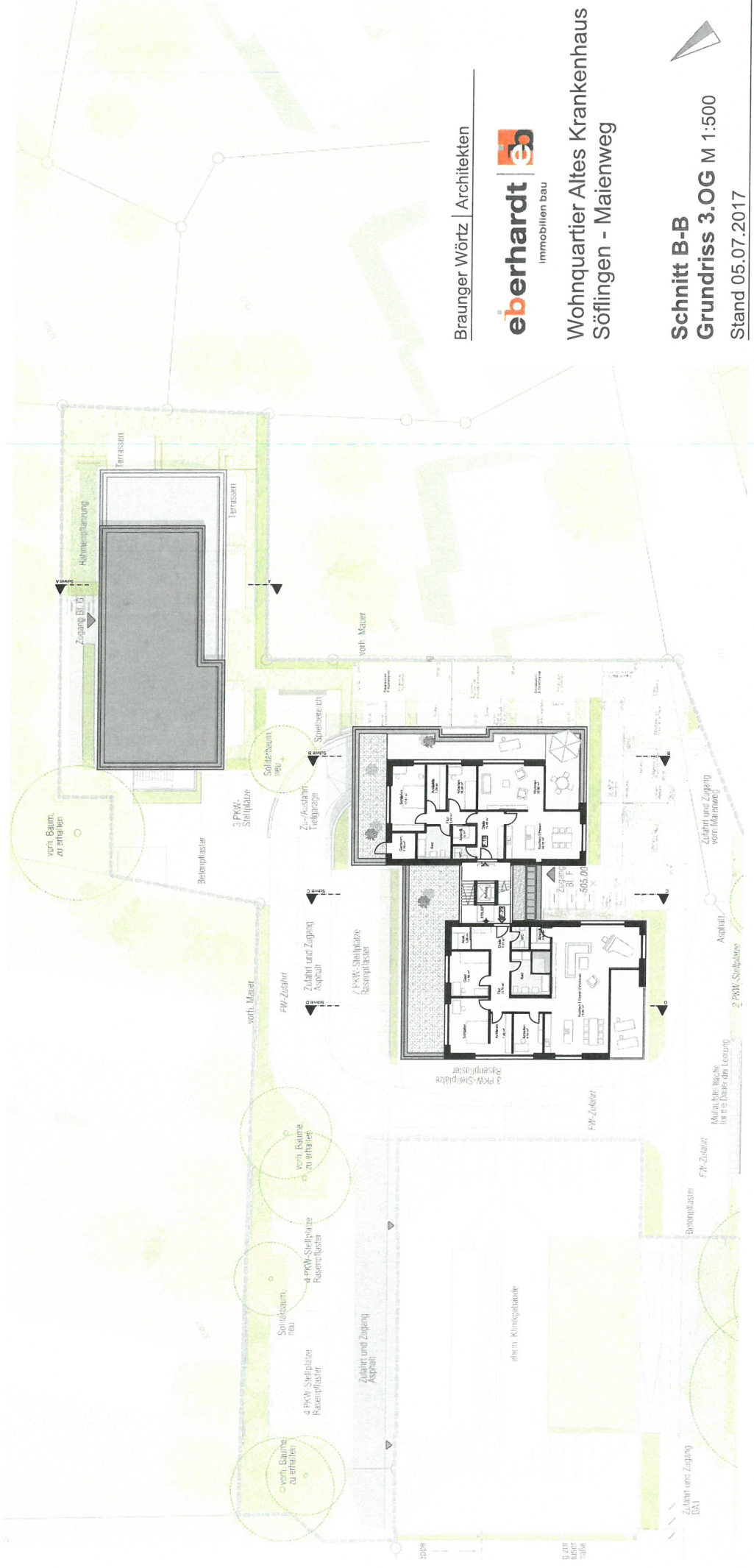
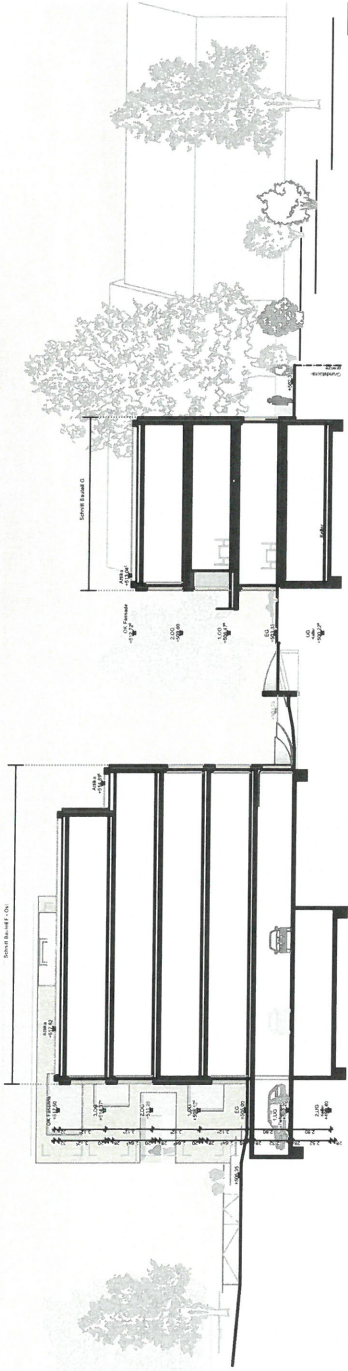
Wohnquartier Altes Krankenhaus
Söflingen - Maltenweg

Schnitt A-A

Grundriss 2.OG M 1:500

Stand 05.07.2017





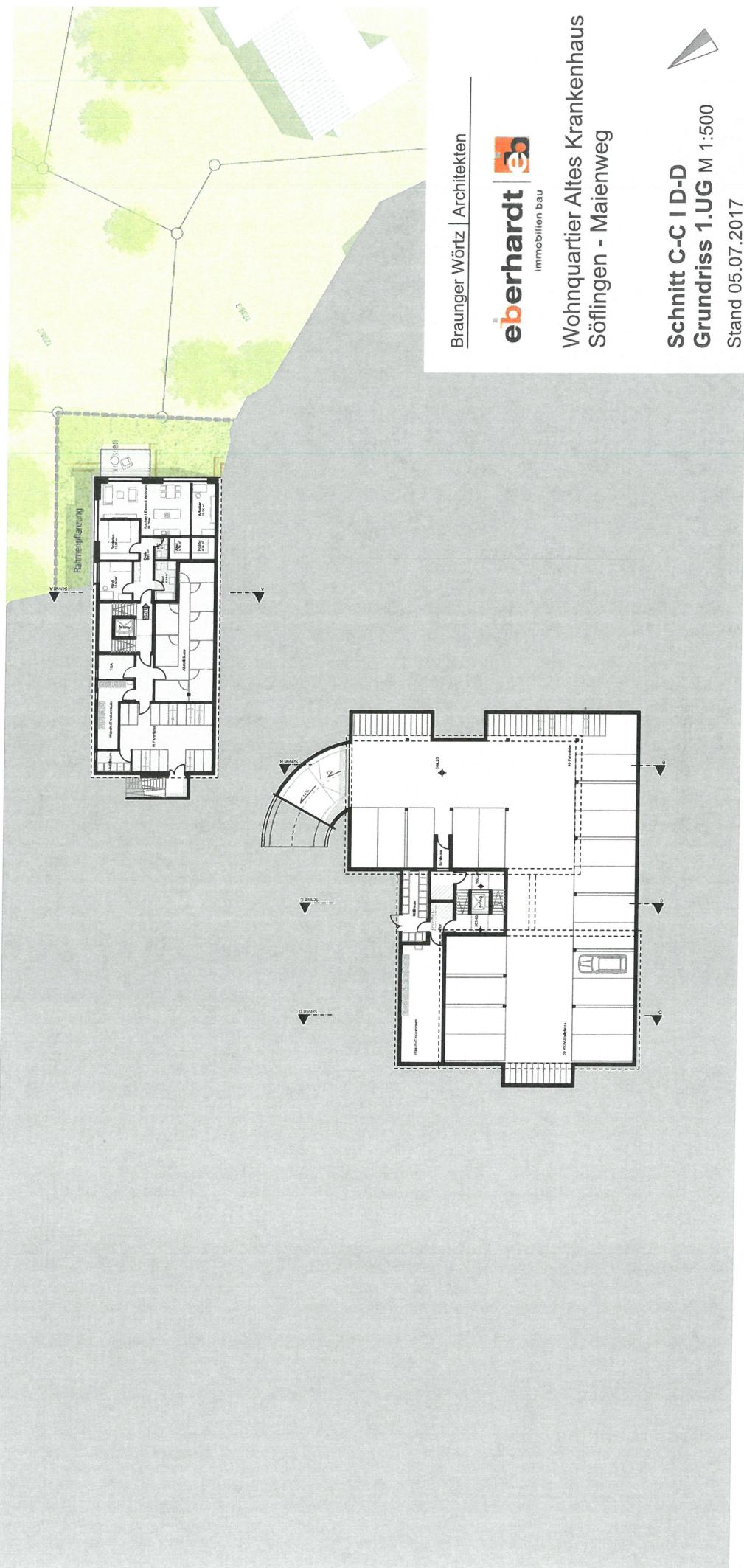
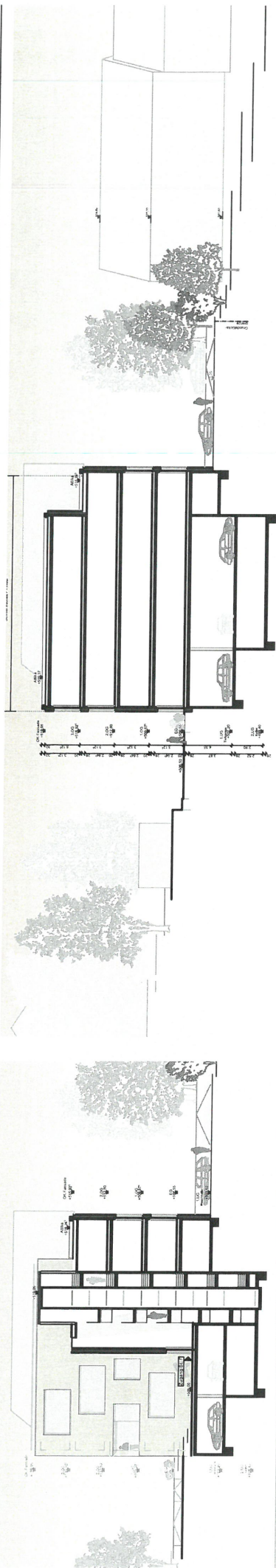
Braunger Wörtz | Architekten



Wohnquartier Altes Krankenhaus
Söflingen - Maientweg

Schnitt B-B
Grundriss 3.OG M 1:500
Stand 05.07.2017





Braunger Wörtz | Architekten

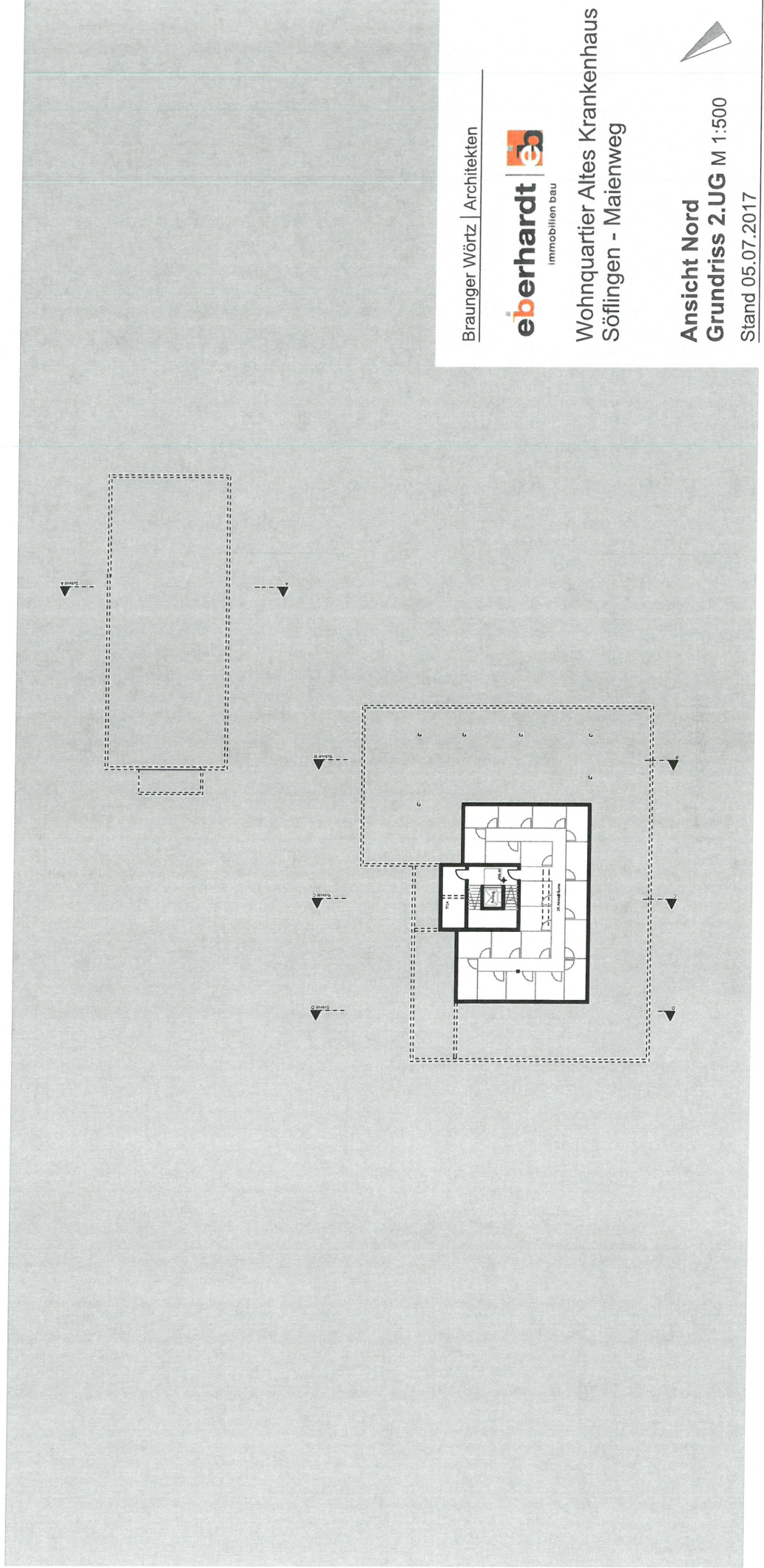
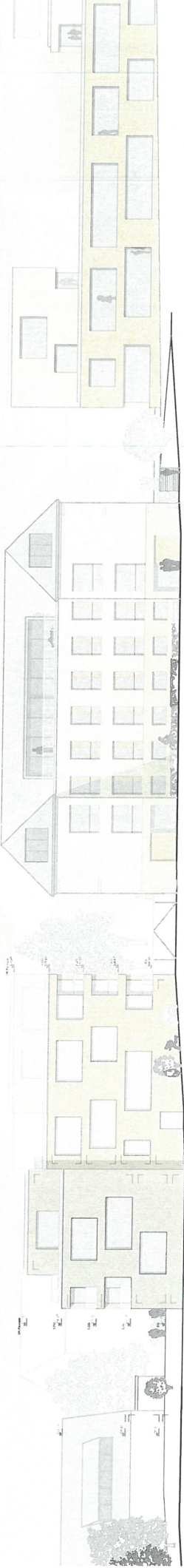


Wohnquartier Altes Krankenhaus
Söflingen - Matenweg

Schnitt C-C I D-D

Grundriss 1.UG M 1:500

Stand 05.07.2017



Braunger Wörtz | Architekten



Wohnquartier Altes Krankenhaus
Söflingen - Maienweg



Ansicht Nord
Grundriss 2.UG M 1:500
Stand 05.07.2017



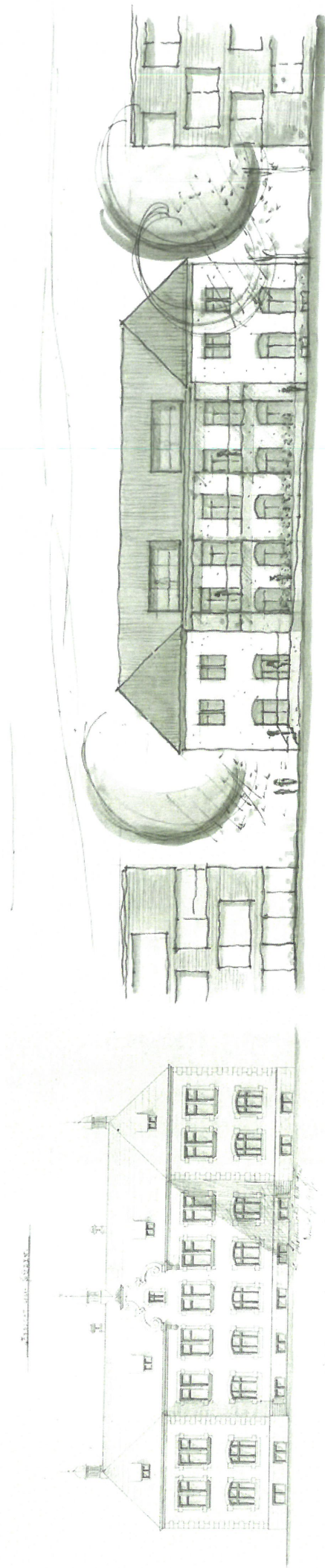
Braunger Wörtz | Architekten



Wohnquartier Altes Krankenhaus
Söflingen - Maienweg

Gebäudeabwicklung Süd-West
BA1 & BA2 unmaßstäblich

Stand 05.07.2017



Braunger Wörtz | Architekten

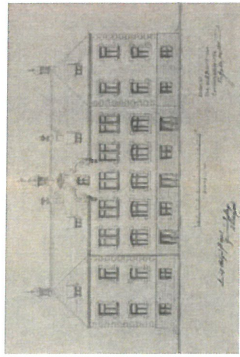
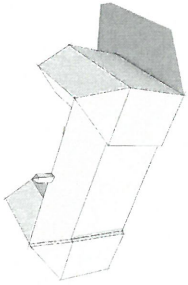


Wohnquartier Altes Krankenhaus
Söflingen - Matenweg

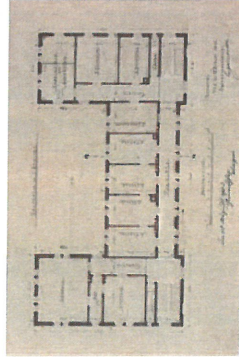
Konzept Altes Krankenhaus

Stand 01.03.2017

1903 - Entstehung Krankenhaus

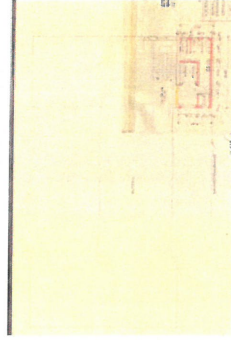
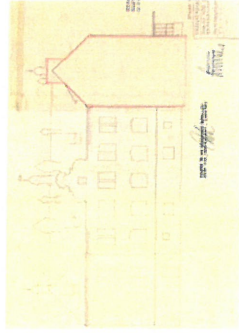
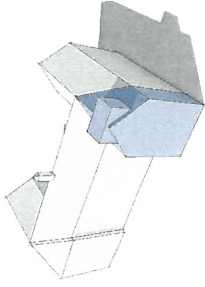


Ansicht Nord

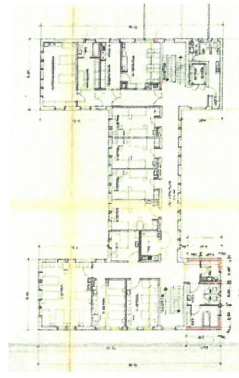
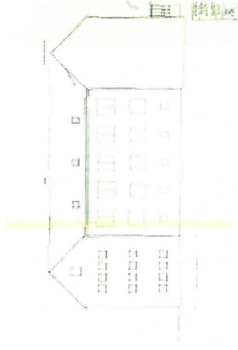
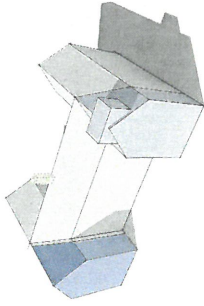


Grundriss 1. Obergeschoss

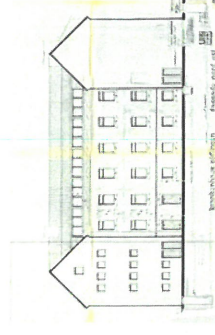
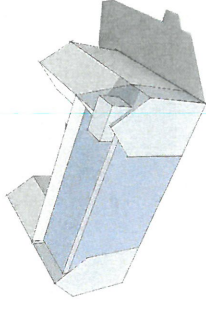
1957 - Anbau Aufzug Nordwest



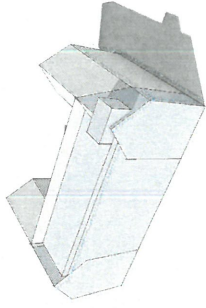
Umbau Fassade
1960 - Anbau Bettenhaus



1981 - Anbau Nord



2002 - Sanierung Fassade



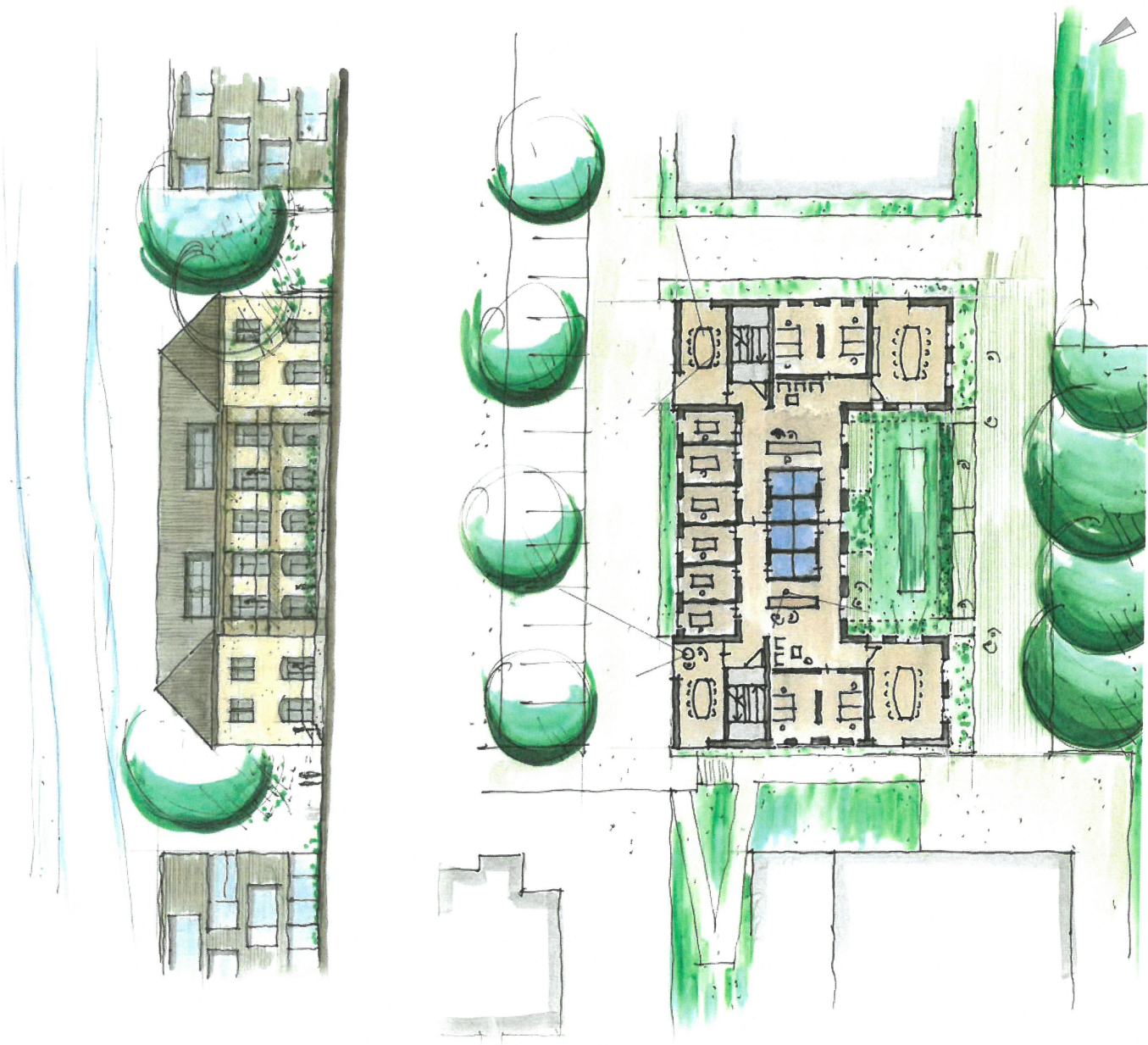
Braunger Wörtz | Architekten



Wohnquartier Altes Krankenhaus
Söflingen - Maienweg
Konzept Altes Krankenhaus

historische Entwicklung

Stand 01.03.2017

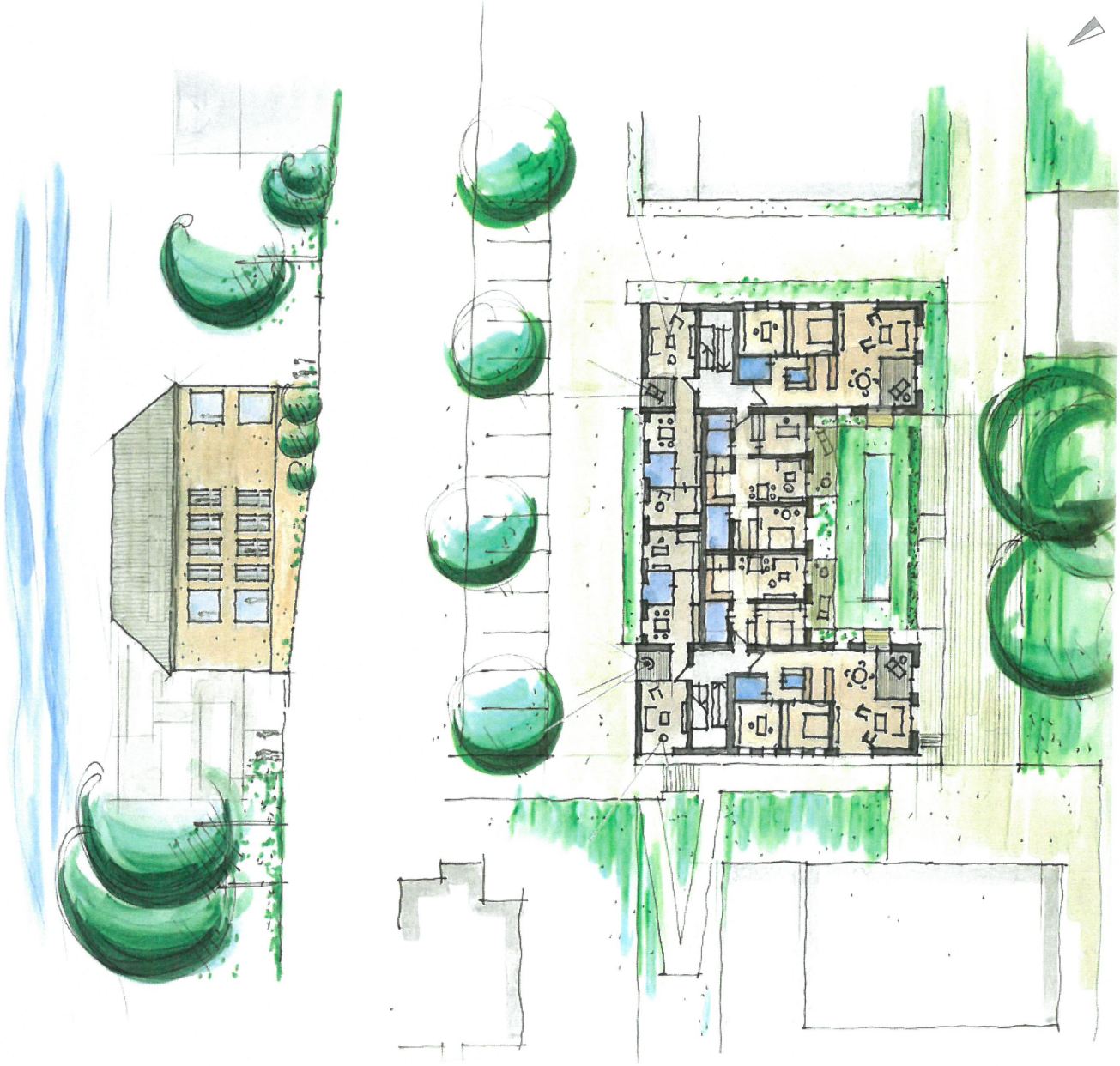


Braunger Wörtz | Architekten



Wohnquartier Altes Krankenhaus
Söflingen - Malenweg
Konzept Altes Krankenhaus

Ansicht Süd
Grundriss EG M 1:500
Stand 01.03.2017



Braunger Wörtz | Architekten

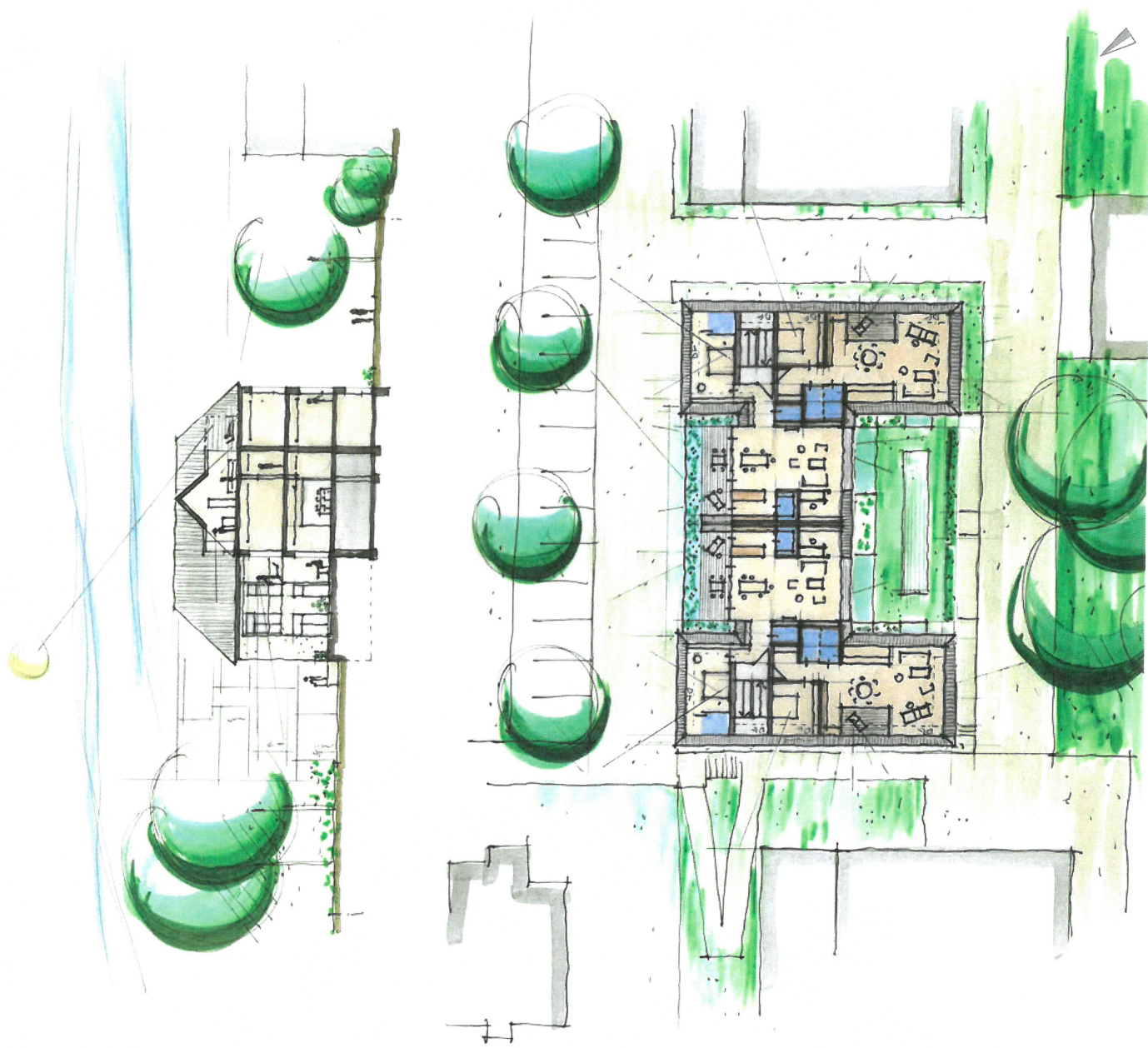


Wohnquartier Altes Krankenhaus
Söflingen - Malenweg
Konzept Altes Krankenhaus

Ansicht Ost

Grundriss 1.OG M 1:500

Stand 01.03.2017



Braunger Wörtz | Architekten

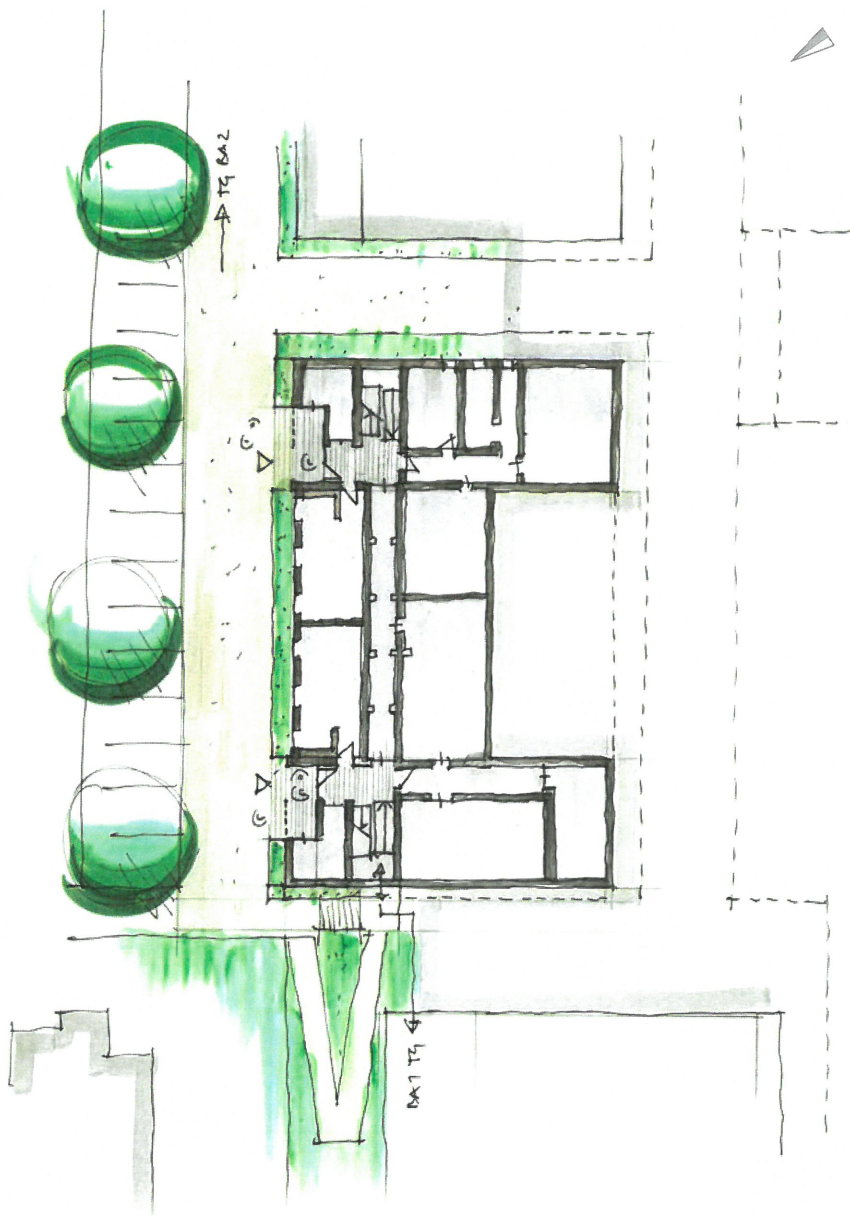
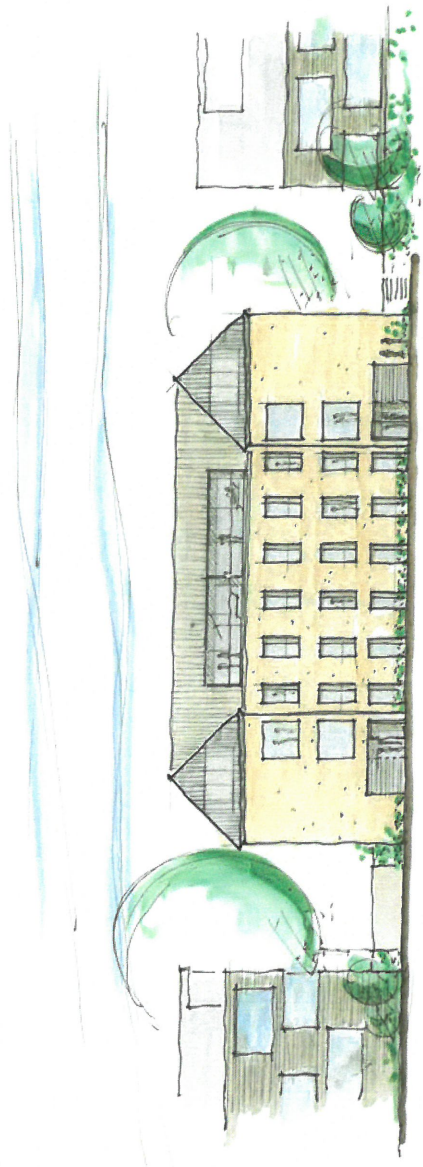


Wohnquartier Altes Krankenhaus
Söflingen - Maienweg
Konzept Altes Krankenhaus

Schnitt

Grundriss DG M 1:500

Stand 01.03.2017



Braunger Wörtz | Architekten



Wohnquartier Altes Krankenhaus
Söflingen - Malenweg
Konzept Altes Krankenhaus

Ansicht Nord
Grundriss UG M 1:500
Stand 01.03.2017